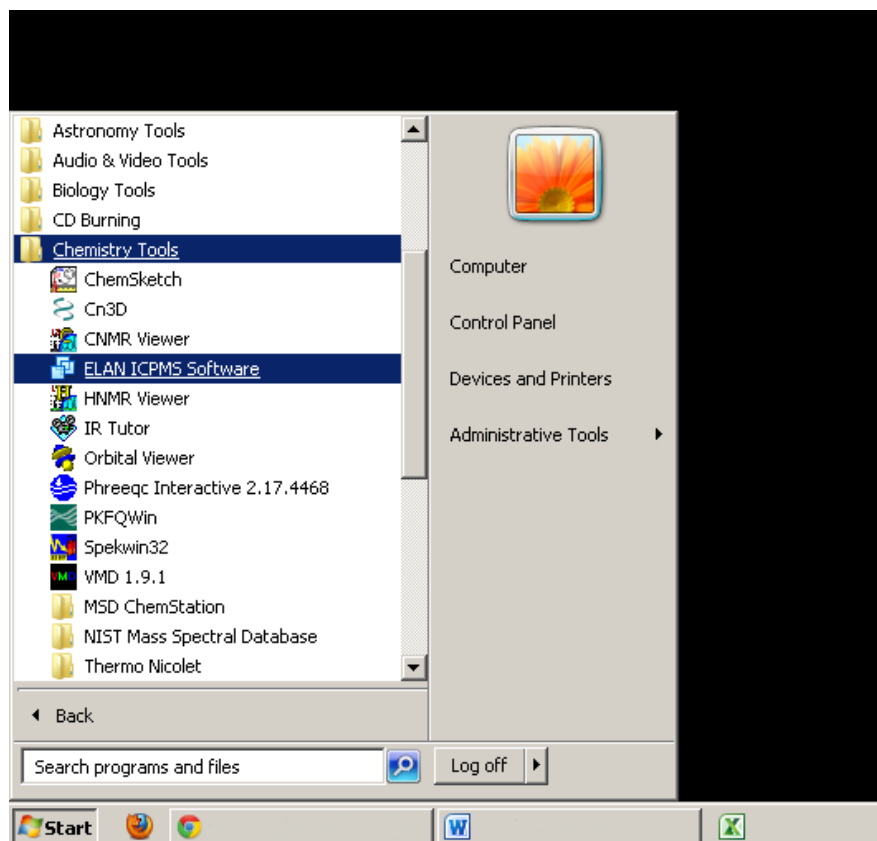


## Accessing ELAN Software for ICP-MS configured as a Virtual Machine (VM).

ELAN Software used for running ICP-MS analysis in the Water Quality lab can be accessed in the CAL or Computer Center using a virtual machine application. This guide will show you how to access the software, create and save Run Lists you can use upstairs, and perform remote data analysis.



To begin, Choose Start

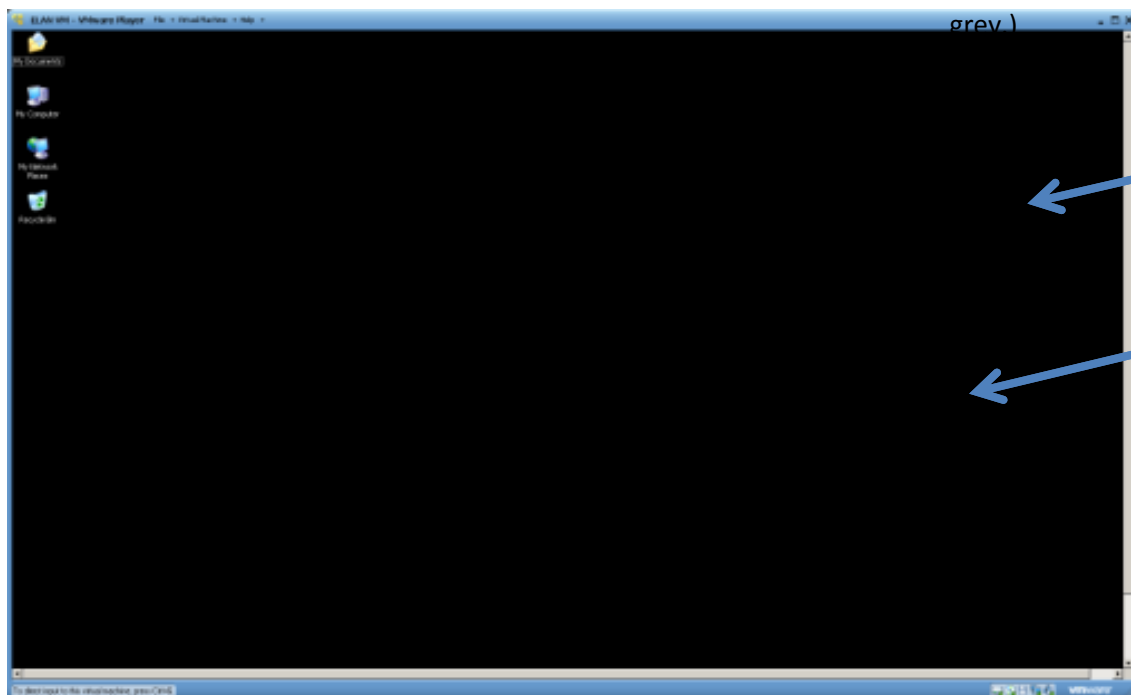
Then choose Chemistry Tools from the All Programs list

Under Chemistry tools, select ELAN ICPMS Software

\*Note: If there is no Chemistry Tools start folder, do a search for "ELAN", or look for the application launch within the Start menu.

This will launch VMware Virtual Machine Player. This program creates a virtual computer similar to the one in the Water Quality lab.

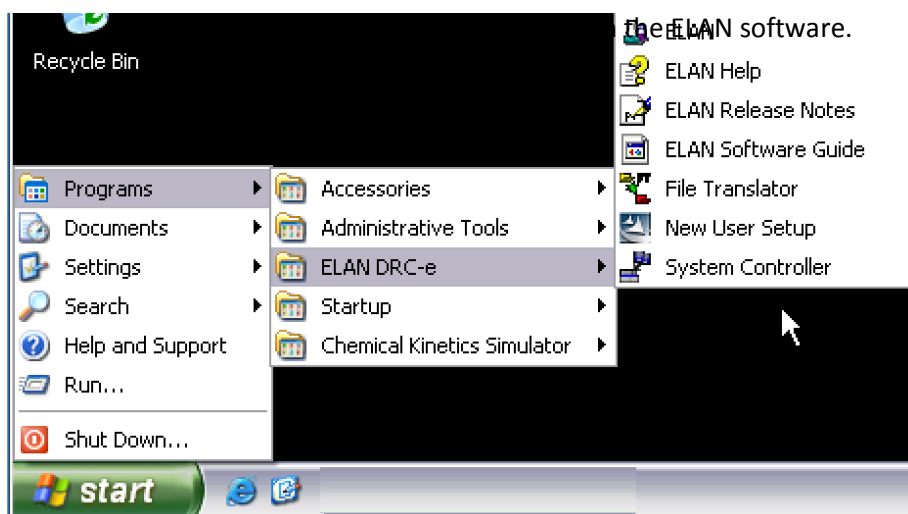
Once the program loads, it will show the virtual computer's desktop. Hit maximize, or scroll down, to access the Task Bar of the virtual machine. (The Start button will be green, not grey.)



VMWare Player Frame

Virtual Desktop

Scroll to find Task Bar

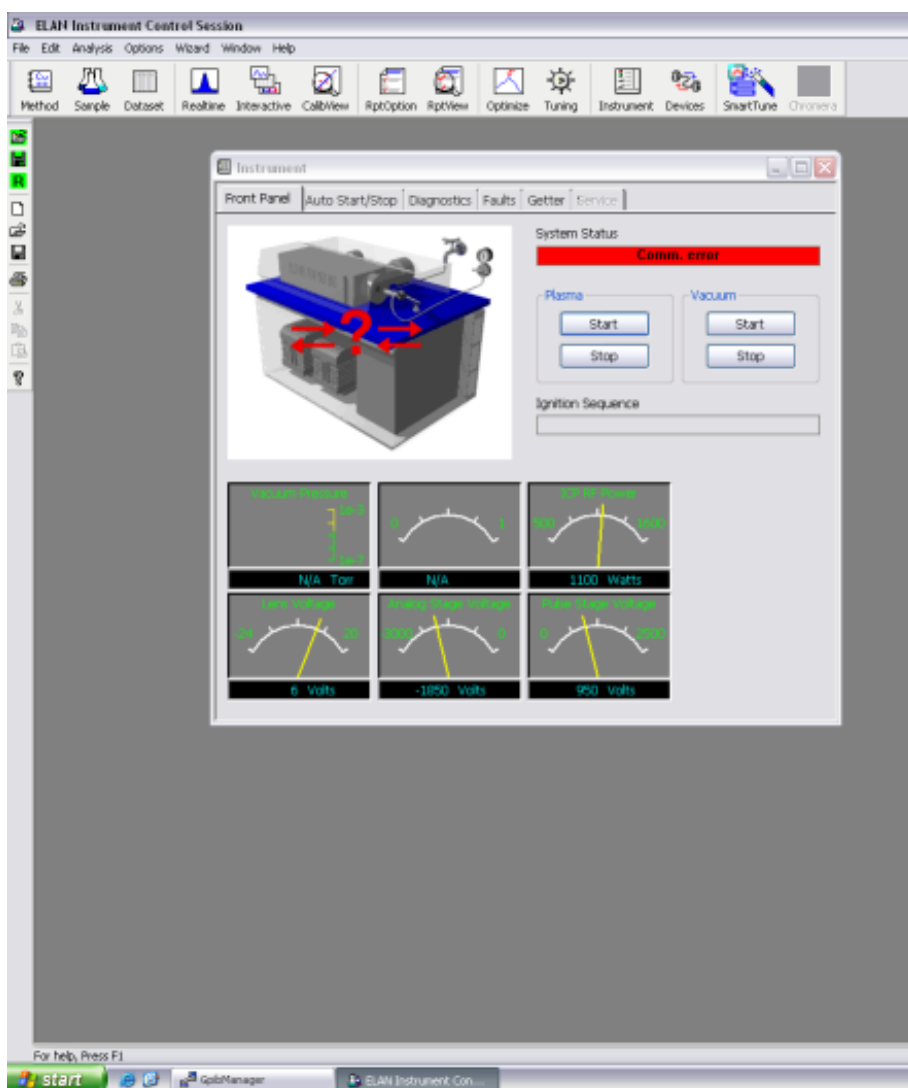


the ELAN software.

Select Start, then highlight Programs. Make sure you are using the green Start button within the virtual machine, not the grey button from your physical machine.

Mouse over ELAN DRC-e

Select the top ELAN listing. It's the one with the two flasks, just like the desktop shortcut upstairs.



Once it opens, the program should look familiar. From here, you can do several things:

- Open workspaces via File -> Open workspaces
- Edit your own workspace to build run lists and change run parameters

However, any changes you make will not be saved so you can access them in the Water Quality Lab. You may need to setup a connection to a file share such as

<\\Orca\deleted nightly>. You can do this by setting up a network drive (My Computer -> Tools -> Map Network Drive -> Select an available drive letter and for "Folder:" type in <\\Orca\deleted nightly> --> click Finish -> when prompted for credentials submit your user name and password.

Keep in mind that files placed on deleted\_ nightly will be deleted

overnight. Working with deleted\_nightly is just a way to get the files off of the virtual machine.

The other option is to connect to Program share: [\\Orca\Programs](#)  
--> and navigate to your program share/class folder.

Windows Logon screen:

